

**Sunshade  
Varioflex LED**

**SUN<sup>®</sup>  
COMFORT**

**by Glatz**

# **Service Manual Varioflex LED**



---

**This service manual describes the following operations:**

<b>1. Disassemble cover .....</b>	<b>3</b>
1.1 Disassembly and assembly .....	3
<b>2. Change of carriage/rope/gear.....</b>	<b>5</b>
2.1 Disassembly and assembly .....	5
<b>3. General information .....</b>	<b>10</b>

# Sunshade Varioflex LED

**SUN**<sup>®</sup>  
**COMFORT**

by Glatz

**Preparation:** Provide a clean surface on which to lay the sunshade  
**Tools:** Cordless screwdriver (hex bits) or cross-head screwdriver, stepladder

**With the sunshade in vertical position, proceed as follows:**

## 1. Disassemble cover

### 1.1 Disassembly and assembly

Loosen all cross-head screws on the seven rod extensions on the closed sunshade. Do not yet loosen the screw on the supporting arm.



To also remove the fabric from the supporting arm, first release the lock on the carriage, then move the carriage upward until the supporting arm is slightly lowered. The fixing screw can then be easily released.



Loosen the Velcro fastening along the supporting arm and return the carriage to the starting position.



Using a ladder, remove the LED with a ¼ turn, remove the top cap from the sunshade in vertical position, then carefully pull the cover over the sunshade frame.



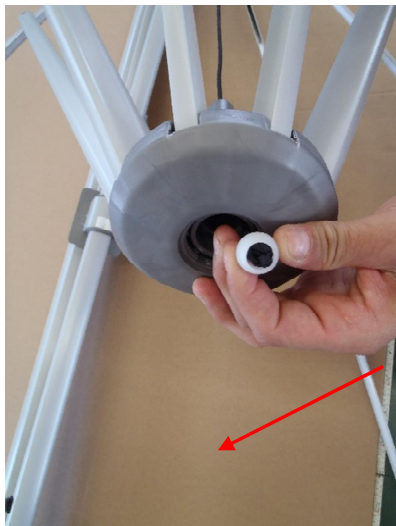
## 2. Change of carriage/rope/gear

### 2.1 Disassembly and assembly

On the closed sunshade, loosen the slide cap and pull it down, out of the slide collar. Now loosen the two cross-head screws.

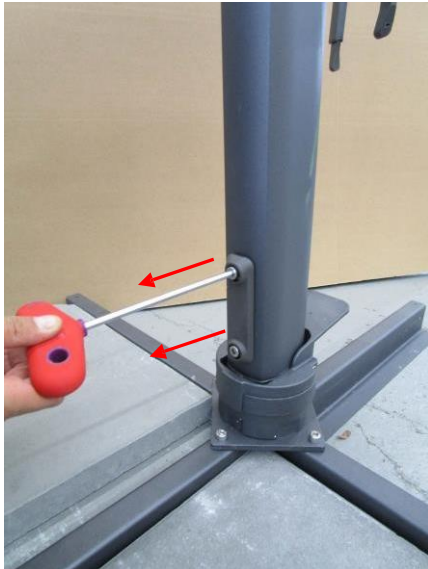


Pull the rod(s) outward to reduce the tension of the rope. This way, you can reach the end of the rope. Loosen the knot and remove the reel. Now slowly lower the rod(s) again.





Loosen the cylinder head screws to the rear of the pole, so that the sunshade can be lifted from the ground attachment.



For repair, the sunshade should be positioned on a clean, flat surface.

To replace the carriage, the side with the hex profile must point downward.

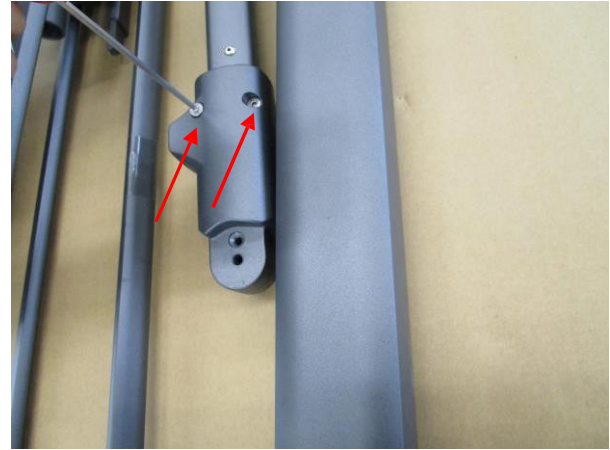


Loosen the top cylinder head screw.

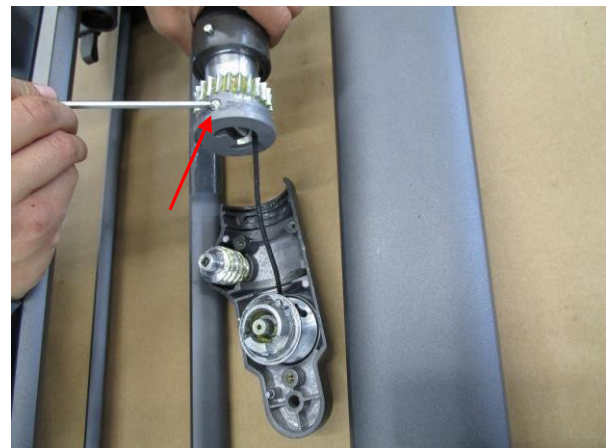
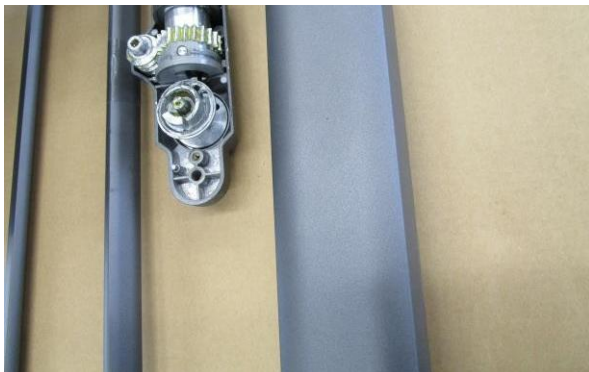
The carriage can then be loosened with the screw knob and pulled downward.



After removing the carriage, the 3 hexagon socket screws at the bottom of the supporting arm can be loosened.



The top shell can now be loosened and removed.  
You need to remove (drive out) the pin.



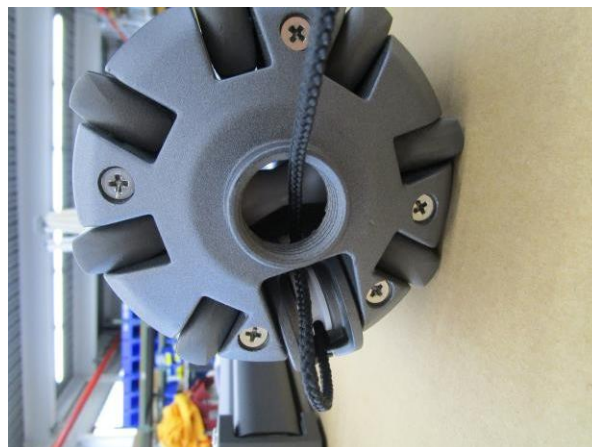


# Sunshade Varioflex LED

**SUN<sup>®</sup>**  
**COMFORT**

by Glatz

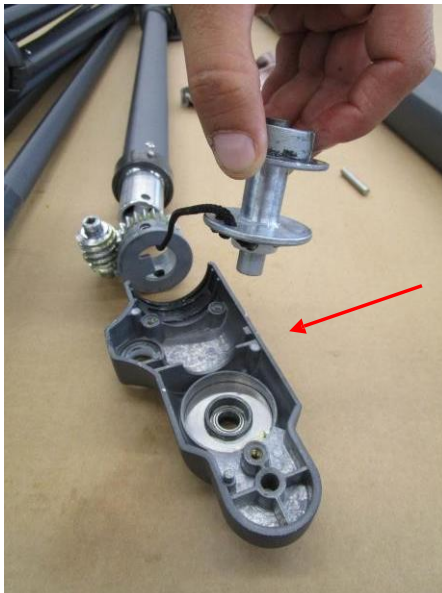
To ensure that the new rope is inserted correctly, you can attach the old, loose rope end to the new rope (with duct tape). Then carefully reinsert the rope over the castors.



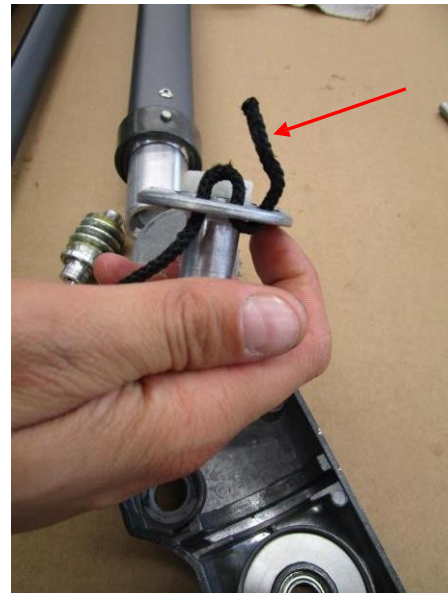
During reassembly of the gear, observe the castor, as it may slip.



Gear assembly



Rope coil winding



### 3. General information

- ***Re-assemble in reverse order to disassembly as described above.***
- ***Check for proper function after completing any repair.***