

**Sunflex
Sunshade**

**SUN[®]
COMFORT**

by Glatz

Sunflex Service Manual



Technical alterations reserved.
© Glatz AG 11/2015

In this service manual the following operations are described:

1. Disassemble cover	3
1.1 Disassembly and assembly	3
2. Change of gear/rope.....	5
2.1 Disassembly and assembly	5
3. General.....	9

Preparation: Provide a clean surface on which to lay the sunshade
Tools: Cordless drill (hex bits) or cross-head screwdriver, stepladder

With the sunshade standing upright, proceed as follows:

1. Disassemble cover

1.1 Disassembly and assembly

Pull out all the rods from the fabric pockets on the closed sunshade.



To also remove the fabric from the carrier arm, first release the lock on the slide, then pull the slide upwards until the carrier arm is slightly lowered. The fixing screw can then be easily released.



Loosen the Velcro fastening along the carrier arm and return the slide to the starting position.



Use a ladder to remove the top cap on the sunshade standing upright and subsequently pull the cover carefully over the sunshade frame.



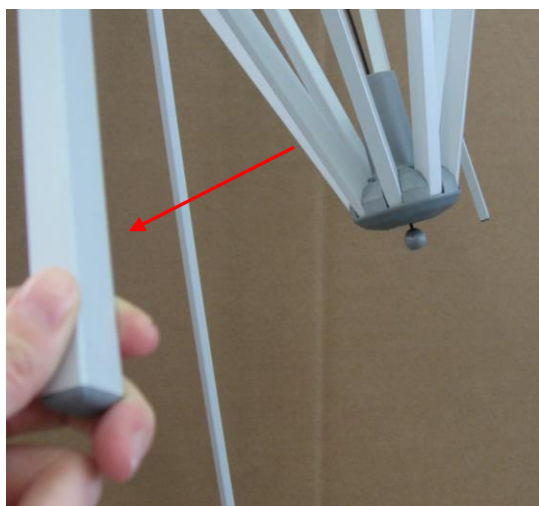
2. Change of gear/rope

2.1 Disassembly and assembly

Loosen the sliding cap on the closed sunshade and pull it down from the sliding collar. Then loosen both cross-head screws.



Pull the rod(s) out to reduce the tension of the rope. Once reaching the end of the rope, loosen the knot and remove the reel. Then lower the rod(s) slowly.



To replace the rope and the gear, the sunshade must first be lifted from the ground attachment and placed on a clean surface.

Connect the old, loose end of the rope with the new rope (duct tape) and then reinsert this carefully over the castors.

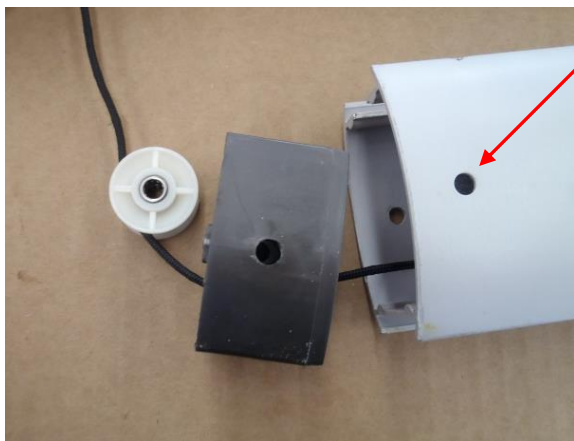
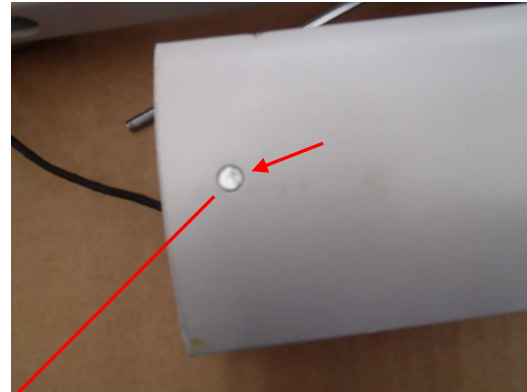


Should the old rope be torn, the new one must be inserted without the support of the old rope (more time required).

At the top of the pole, first loosen the cover and then the two hexagon socket screws on the side.



Press the lock on the slide to pull the top of the pole out more easily. Then remove the pin at the upper end of the pole and extract the pulley case and the pulley.



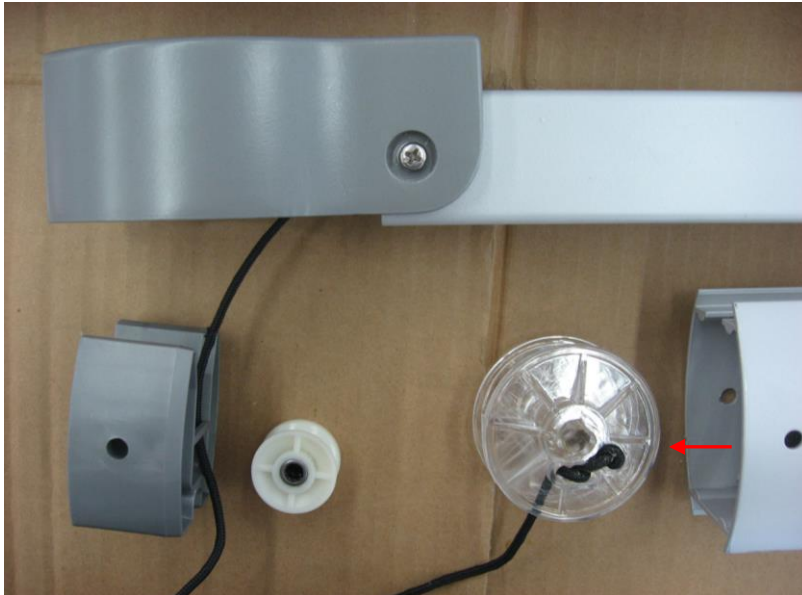
Carefully loosen the crankcase and remove. Warning: when removing the case please ensure the small spring does not get lost.



Pull the crank axle out of the crankcase.



Pull the rope coil attached to the rope out of the pole, loosen the old rope and, as pictured below, insert the new one.



3. General

- ***Re-assemble in reverse order.***
- ***Check performance after completing any repair.***